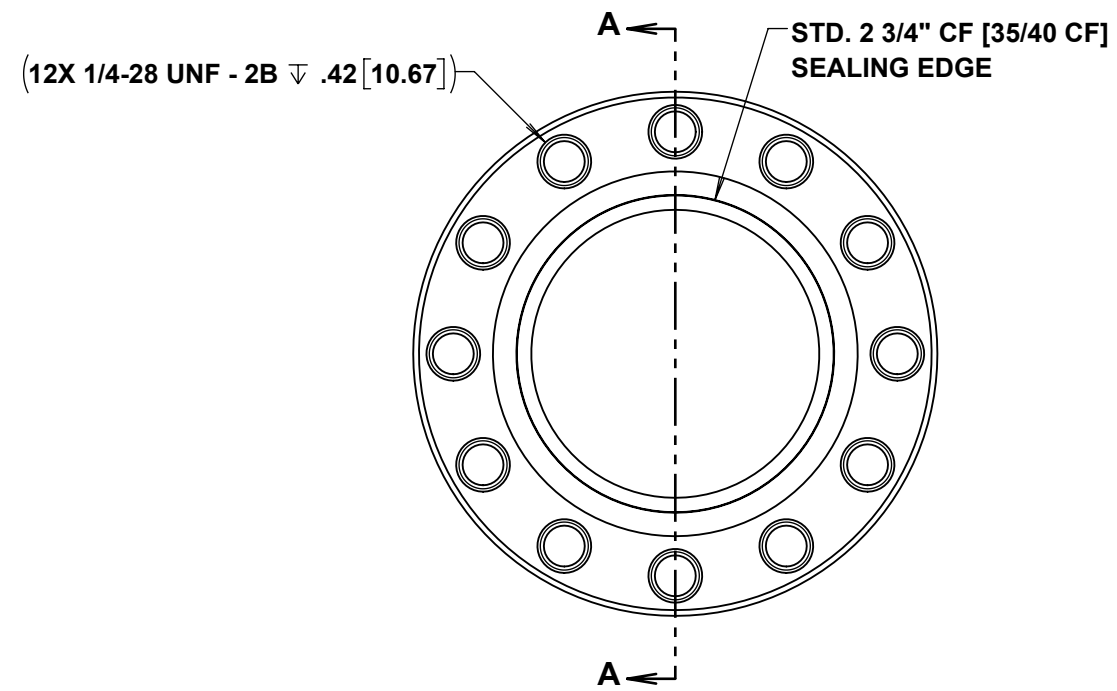
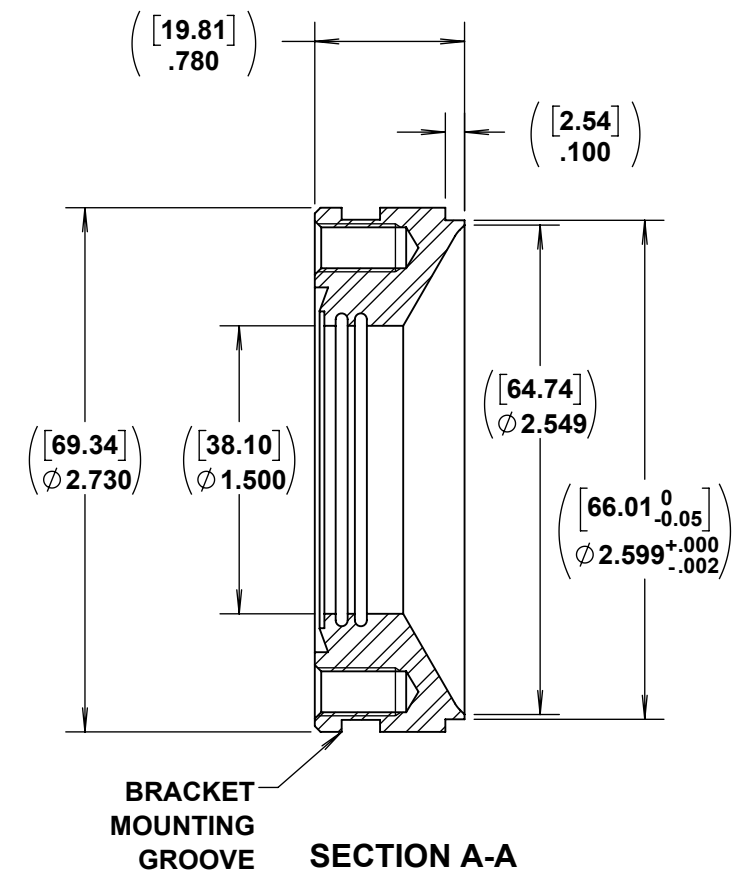


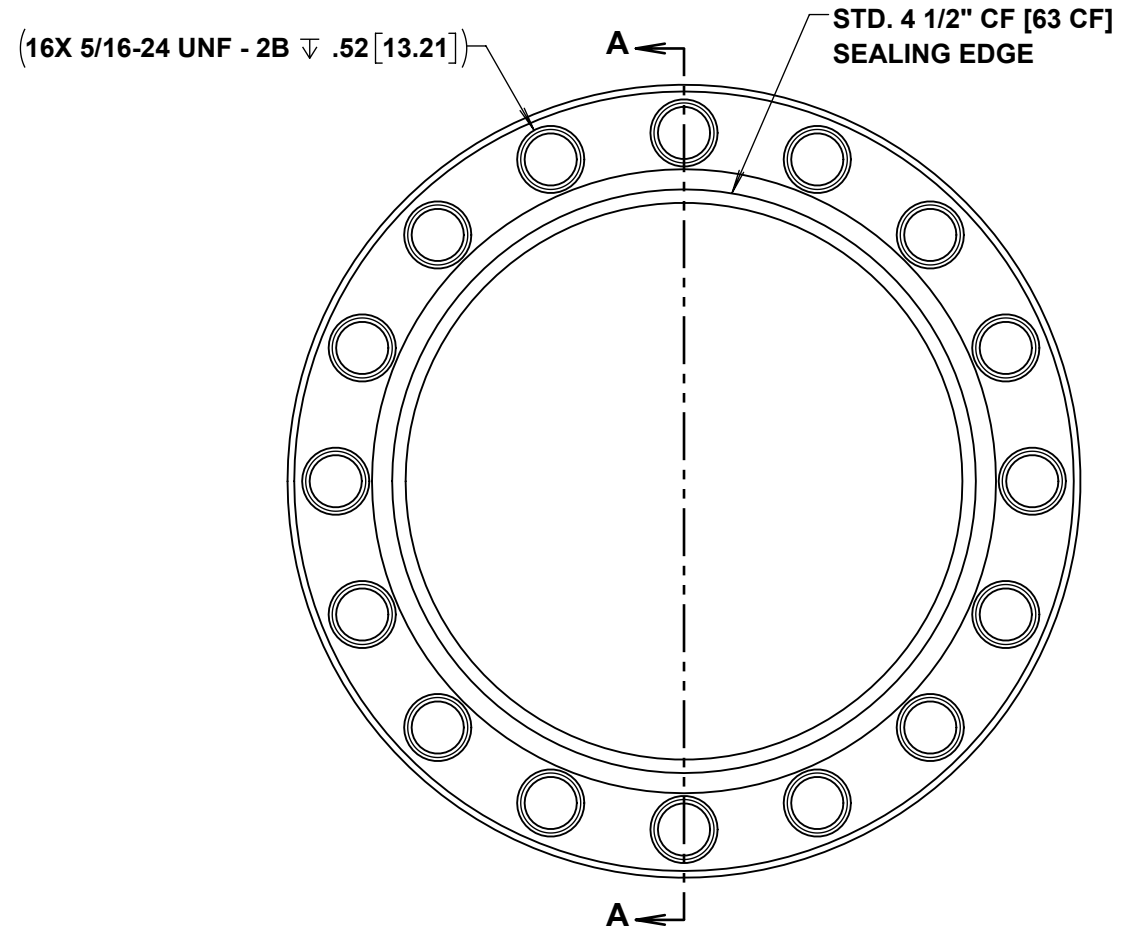
SECTION A-A

MCF133-PWeldFig (P/N: 53-630000) 316L

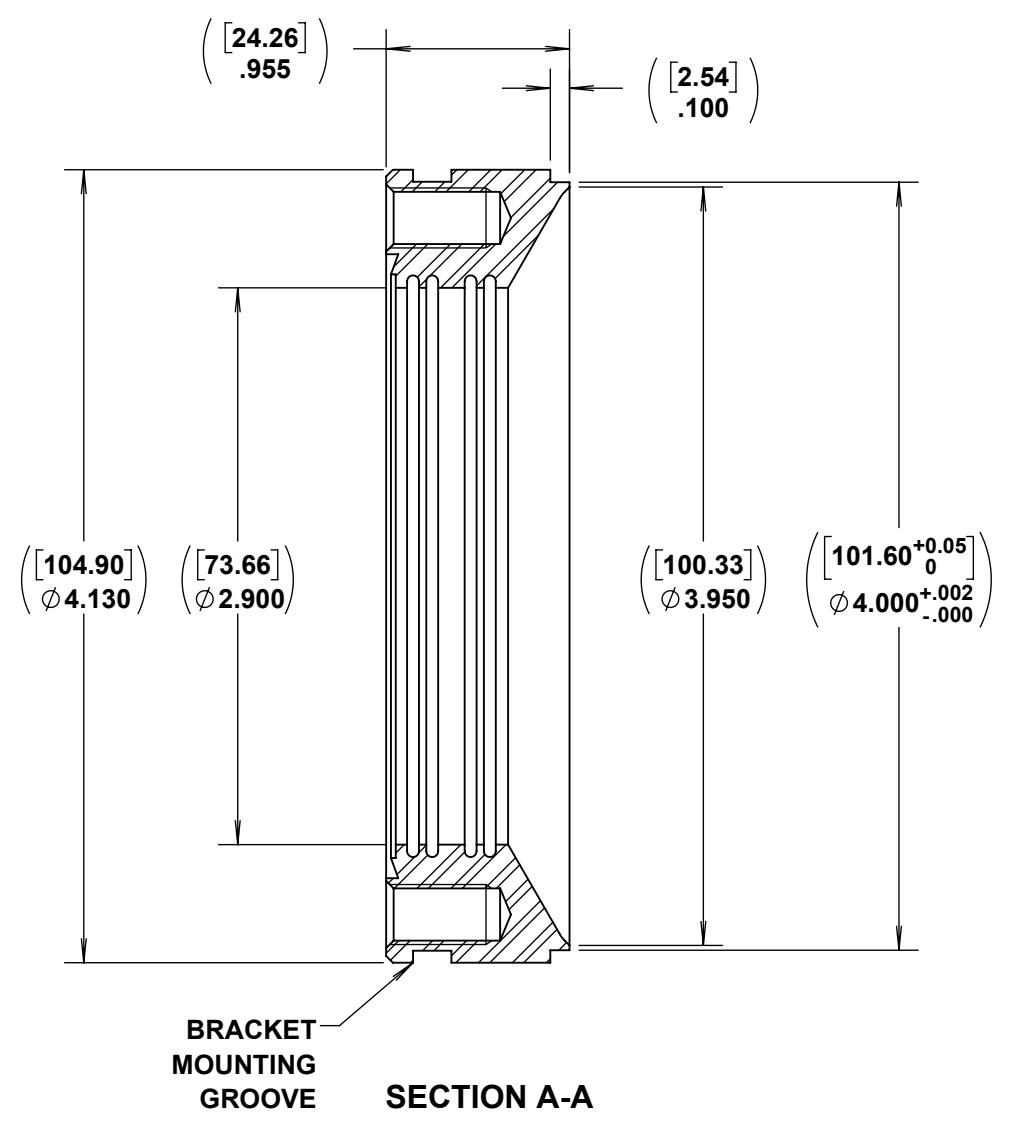


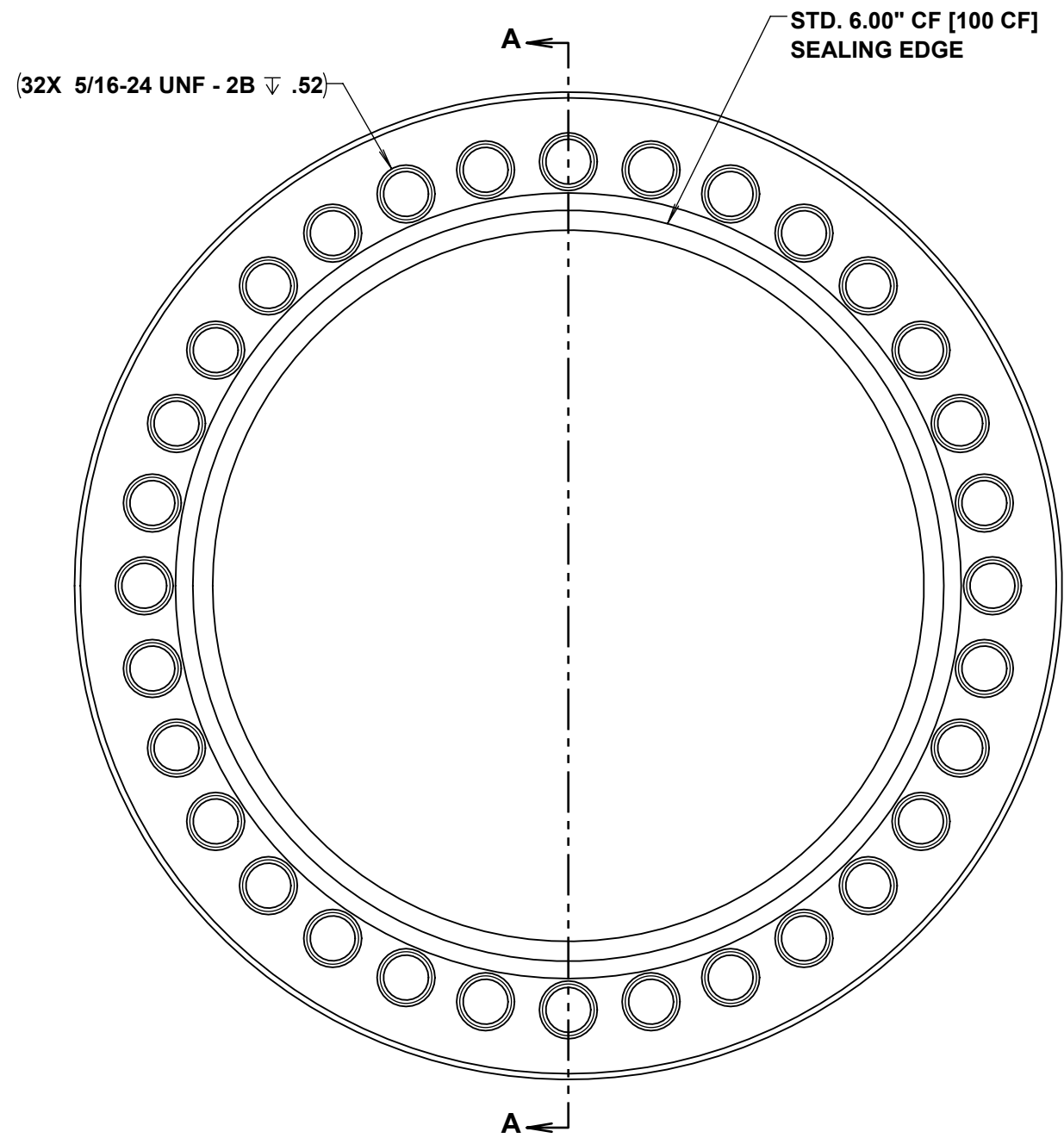
MCF275-PWeldFlg (P/N: 53-630800) 316L



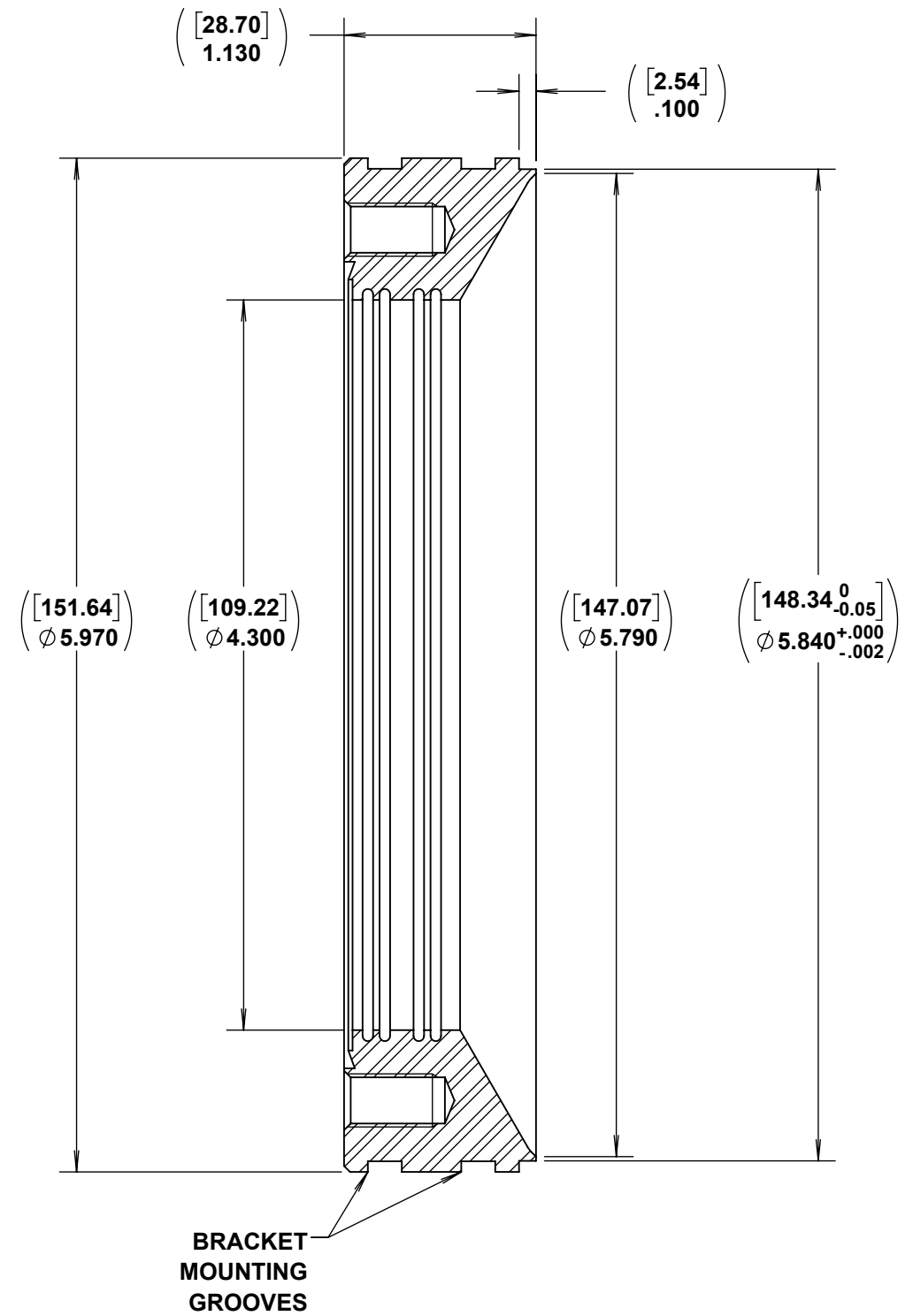


MCF450-PWeldFig (P/N: 53-630200) 316L



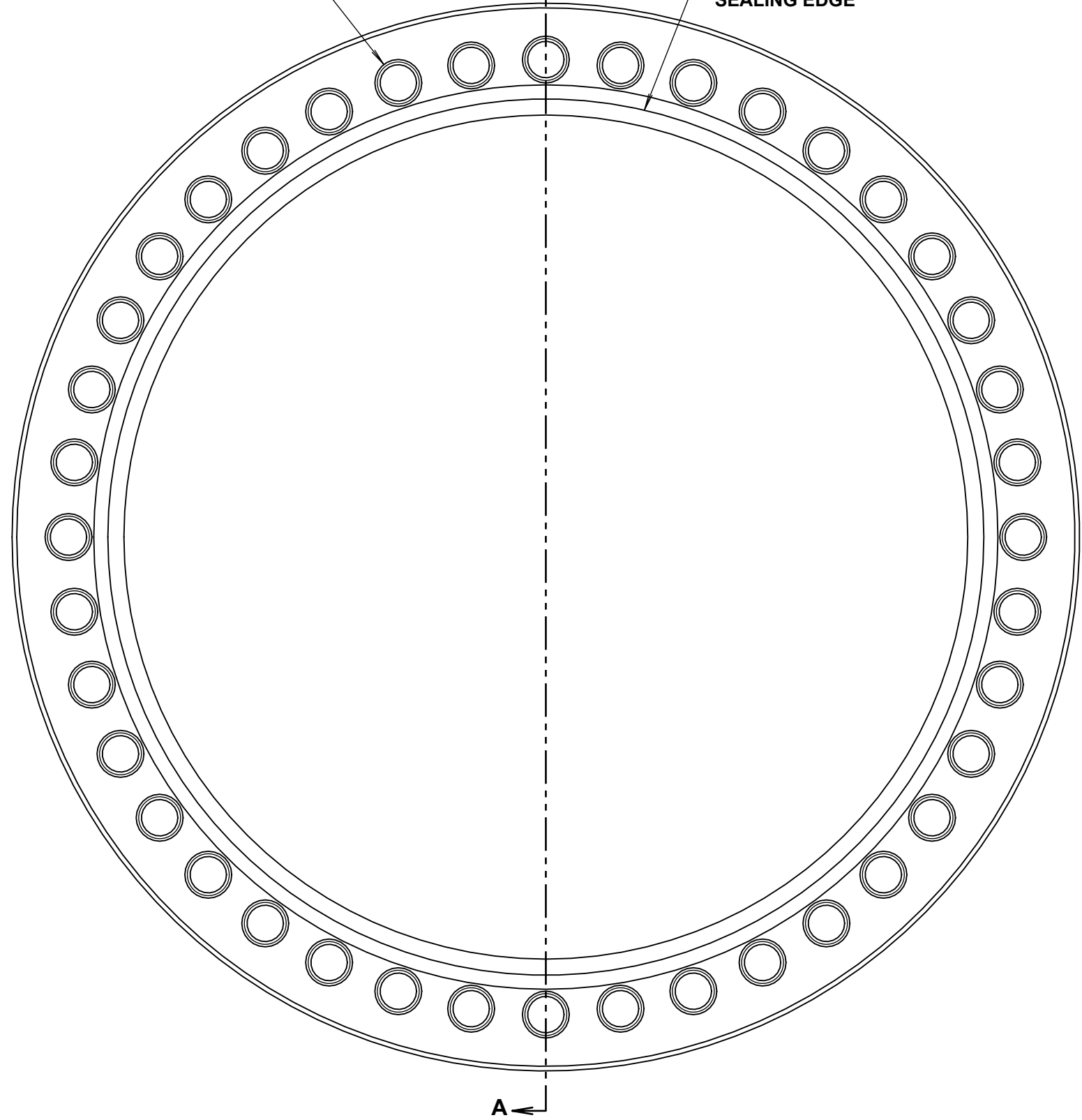


MCF600-PWeldFlg (P/N: 53-630300) 316L



SECTION A-A

(40X 5/16-24 UNF - 2B ∇ .52 [13.21])



STD. 8.00" CF [160 CF]
SEALING EDGE

MCF800-PWeldFlg (P/N: 53-630400) 316L

([28.70]
1.130)

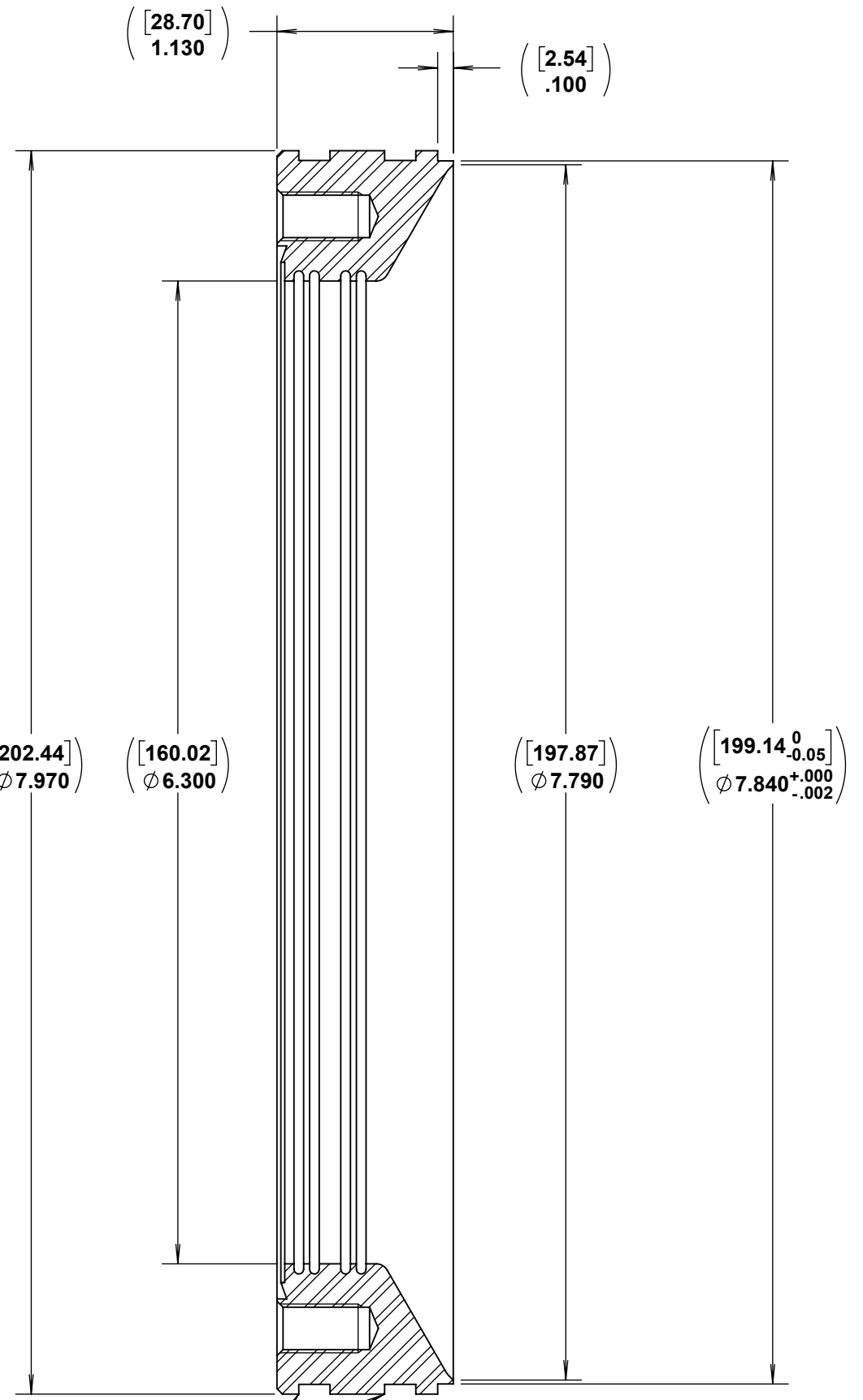
([2.54]
.100)

([202.44]
 ϕ 7.970)

([160.02]
 ϕ 6.300)

([197.87]
 ϕ 7.790)

([199.14⁰
-0.05]
 ϕ 7.840^{+0.000}
-.002)



BRACKET
MOUNTING
GROOVE

SECTION A-A