



FLANGE ADAPTOR

Multi-CF™ FITTING

CONVERT 2¾ CF AND 1⅓ CF CF feedthroughs FROM ANY MANUFACTURER TO USE GROOVE GRABBER TECHNOLOGY

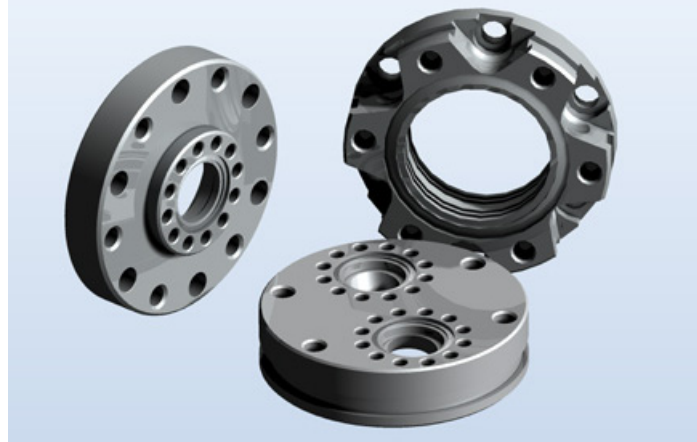
APPLICATIONS:

ADAPTS COMMON FEEDTHROUGHS TO GROOVE-GRABBER TECHNOLOGY

FEATURES / OPTIONS:

ATTACHES TO ALMOST ANY 1⅓ CF OR 2¾ CF FEEDTHROUGH GRABBER GROOVES ON EACH 2¾ CF SEALING SURFACE
0.700 IN LENGTH SEALING SURFACE TO SEALING SURFACE
UNITARY STAINLESS STEEL 316 CONSTRUCTION

2¾ Multi-CF and 1⅓ Multi-CF Flange Adaptors:
MCF275-FA101-700
MCF275-FA102-700
MCF275-FA200-700



2¾ CF Flange Adaptors

THE FLANGE ADAPTOR

The Flange Adaptor is a two or three-port Multi-CF Fitting, consisting of one 2¾ CF sealing surface on one side, and one or two 1⅓ CF 1⅓ CF sealing surfaces or another 2¾ CF sealing surface on the other side. Flange Adaptors allow for the addition of Groove-Grabber/ Grabber-Groove technology to standard flange vacuum feedthroughs. The 2¾ CF sealing surfaces each have a pair of Grabber Grooves.

	MCF275-FA101-700	MCF275-FA102-700	MCF275-FA200-700
Multi-CF FITTING	Flange Adaptor		
COMMON APPLICATION	apparatus mounting with multiple ports		
CONSTRUCTION / MATERIAL	Unitary Stainless Steel 316		
1⅓ CF SEALING SURFACES	One with (12) 8-32 tapped bolt hole	Two with (12) 8-32 tapped bolt holes	None
2¾ CF SEALING SURFACES	One with (6) 1/4-28 tapped bolt holes and (6) 1/4-28 clear bolt holes, plus one pair of Grabber Grooves	One with (6) 1/4-28 tapped bolt holes and (6) 1/4-28 clear bolt holes, plus one pair of Grabber Grooves	Two, one with (6) 1/4-28 tapped bolt holes and (6) 1/4-28 clear bolt holes, the other with (6) 1/4-28 tapped bolt holes, each with a pair of Grabber Grooves
LENGTH, GASKET TO GASKET	0.700 inch		

