

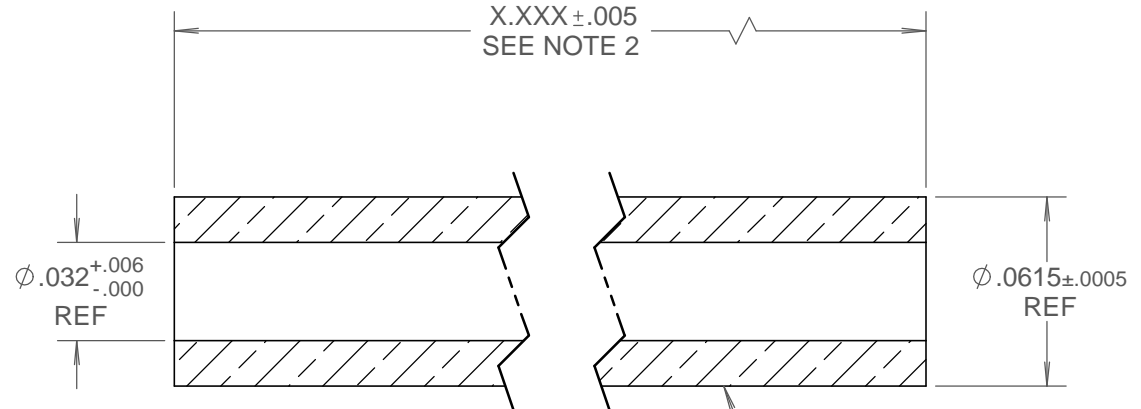
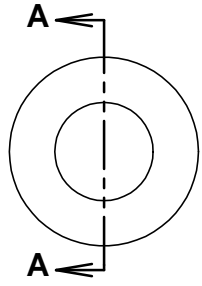
8 7 6 5 4 3 2 1

D

C

B

A



SECTION A-A

CENTERLESS GROUND
TO DIMENSION SHOWN
REF

- NOTES:
1. MATERIAL : MAKE FROM P/N 51-000041 (99% ALUMINA (AL₂O₃)).
 2. THE KPI PART NUMBER INDICATES THE LENGTH OF THE TUBE. THE LAST FOUR DIGITS OF THE PART NUMBER DESCRIBE THE TUBE LENGTH IN THOUSANDTHS OF AN INCH.
EXAMPLE: 52-111500 EQUALS A LENGTH OF 1.500 INCHES LONG.

**TABULATED DRAWING
PART# 52-11XXXX
SEE NOTE 2**

UNLESS OTHERWISE SPECIFIED
DIMENSIONS ARE IN INCHES
TOLERANCES ARE:
X.X OR X/X 1/64 ANGULAR ± 0.5°
X.XX ± 0.01 DO NOT
X.XXX ± 0.003 SCALE
X.XXXX ± 0.0010 DRAWING

THIS DOCUMENTATION IS THE PROPERTY OF
KIMBALL PHYSICS, INC. AND IS PROVIDED TO
THE RECEIVING PARTY (AND ITS EMPLOYEES
HAVING A NEED TO KNOW) SOLELY FOR
EVALUATION. IT MAY NOT BE USED BY THE
RECEIVING PARTY FOR ANY OTHER PURPOSE
OR DISCLOSED TO ANY THIRD PARTY WITHOUT
THE WRITTEN CONSENT OF KIMBALL PHYSICS INC.

KIMBALL PHYSICS INC.

KIMBALL HILL RD., WILTON, NH 03086-9742 U.S.A. (603) 878-1616

TUBE, Al₂O₃-Tu-B-1Bore032-XXXX, (TABULATED)

MATERIAL	NOTE 1	SCALE	DWG. No.	REV.
FINISH 60	BREAK EDGES 0.005/0.010	16:1 A SIZE	52-11XXXX	A
SHEET 1 OF 1		MODEL No. Al ₂ O ₃ -TU-B-XXXX		

REV	REVISION DESCRIPTION	DATE	BY	CHK	QTY	USED ON
A	INITIAL RELEASE	06/23/07	PLK	PLK		

8 7 6 5 4 3 2 1