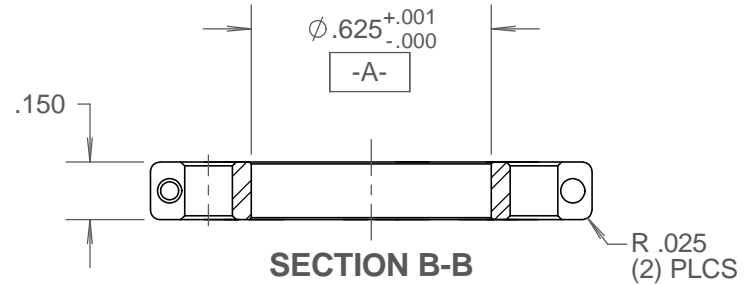
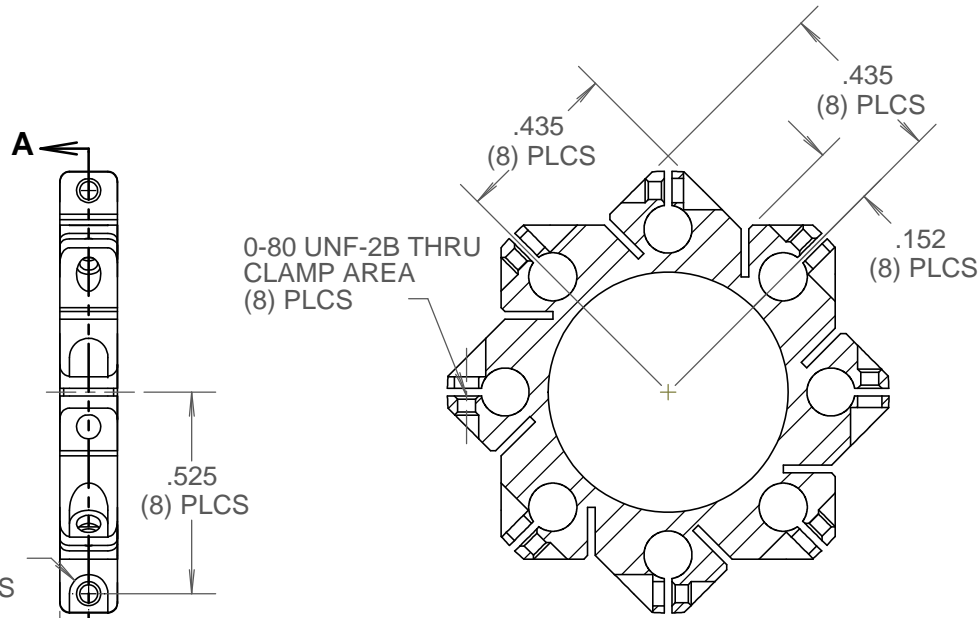


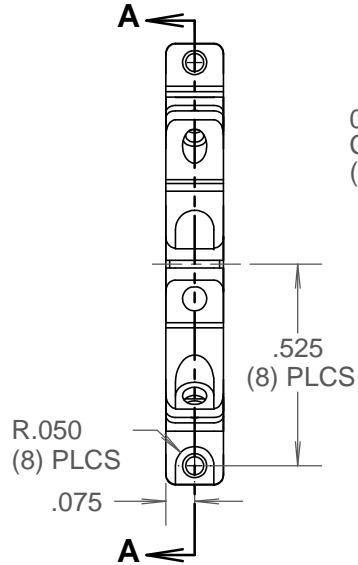
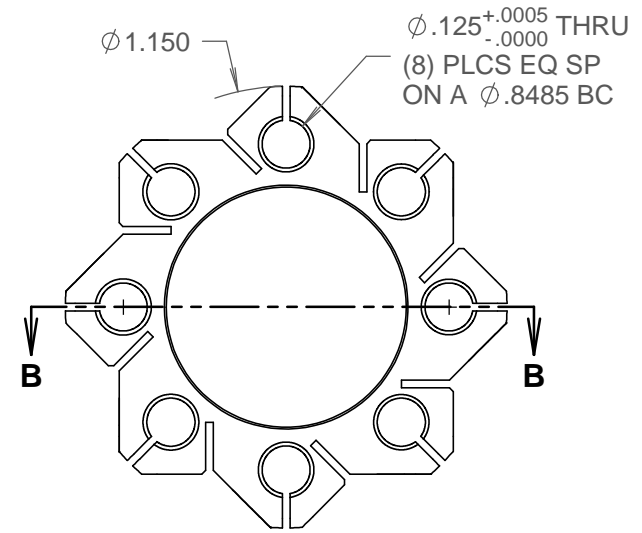
**ACTUAL SIZE**



**SECTION B-B**



**SECTION A-A**



UNLESS OTHERWISE SPECIFIED DIMENSIONS ARE IN INCHES AND TOLERANCES ARE:  
 X.XX ± 0.01 ANGULAR:  
 X.XXX ± 0.003 X° ± 0.5°  
 X.XXXX ± 0.0010 X.X° ± 0.1°  
 INTERNAL CORNERS R.015 MAX

**KIMBALL PHYSICS INC.**   
 KIMBALL HILL RD., WILTON, NH 03086-9742 U.S.A. (603) 878-1616

THIS DOCUMENTATION IS THE PROPERTY OF KIMBALL PHYSICS, INC. AND IS PROVIDED TO THE RECEIVING PARTY (AND ITS EMPLOYEES HAVING A NEED TO KNOW) SOLELY FOR EVALUATION. IT MAY NOT BE USED BY THE RECEIVING PARTY FOR ANY OTHER PURPOSE OR DISCLOSED TO ANY THIRD PARTY WITHOUT THE WRITTEN CONSENT OF KIMBALL PHYSICS, INC.

**CLAMP ELEMENT, (8-.150-.625)**

MATERIAL	SCALE	DWG. No.	REV.
316L SS	2:1	SS_EC_8_150_625	B
FINISH 16	BREAK EDGES	SHEET 1 OF 1	MODEL No. 443E500
0.005/0.010			

REV	REVISION DESCRIPTION	DATE	BY	CHK	QT	USED ON
B	DRAWING SHOWED SS-EC-8-150-521 ELEMENT CLAMP	04/10/08	PLK	PLK		
A	INITIAL RELEASE	10/24/05	DJO	PLK		