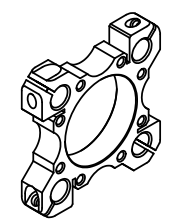
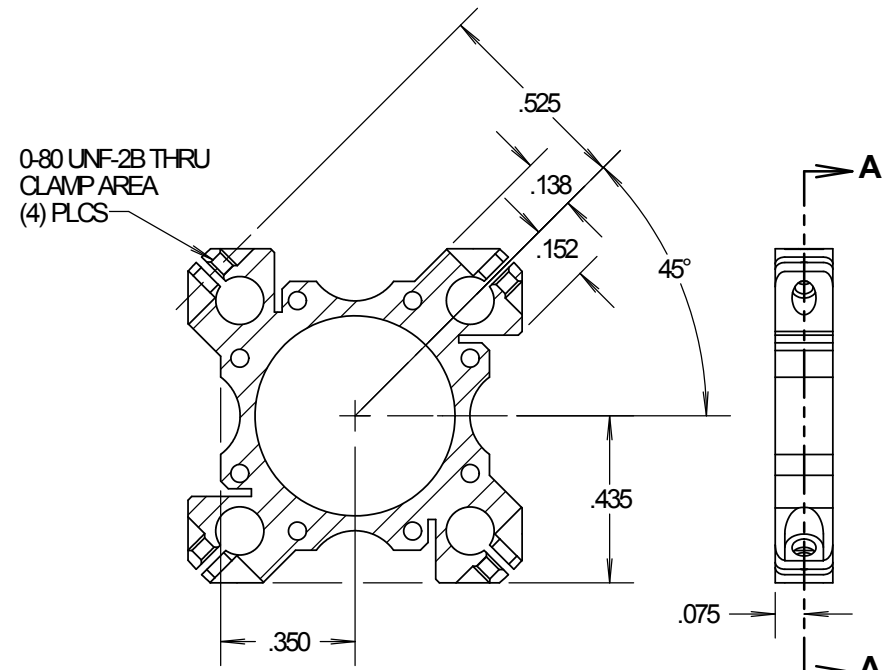


8 7 6 5 4 3 2 1

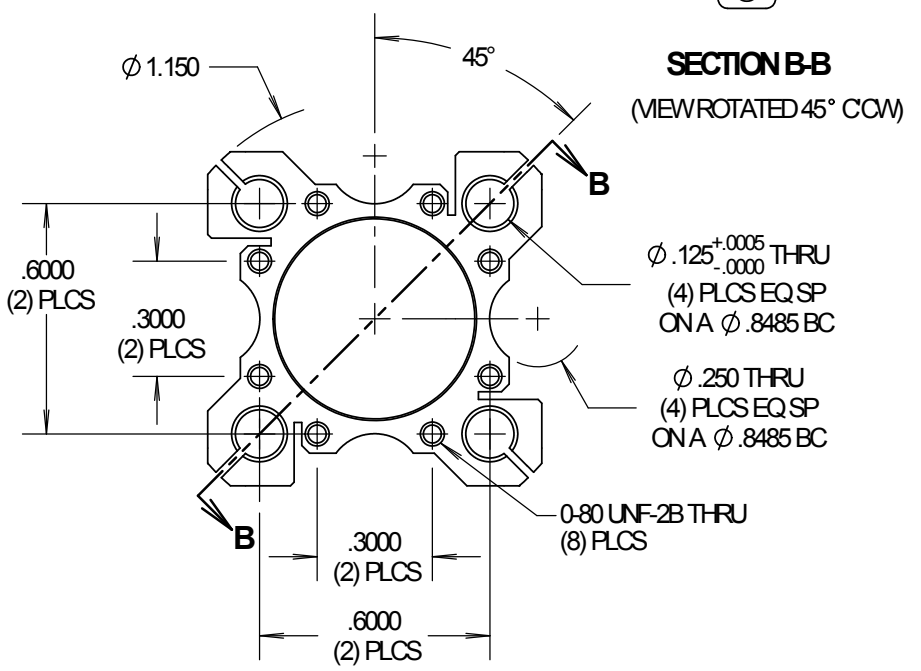
D  
C  
B  
A  
A



**ACTUAL SIZE**



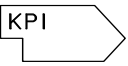
**SECTION A-A**



**SECTION B-B**  
(MEWROTATED 45° COW)

REV	REVISION DESCRIPTION	DATE	BY	CHK	QI	USED ON
A	INITIAL RELEASE	11/07/05	DJO			
B						

THIS DOCUMENTATION IS THE PROPERTY OF KIMBALL PHYSICS, INC. AND IS PROVIDED TO THE RECEIVING PARTY (AND ITS EMPLOYEES HAVING A NEED TO KNOW) SOLELY FOR EVALUATION. IT MAY NOT BE USED BY THE RECEIVING PARTY FOR ANY OTHER PURPOSE OR DISCLOSED TO ANY THIRD PARTY WITHOUT THE WRITTEN CONSENT OF KIMBALL PHYSICS, INC.

**KIMBALL PHYSICS INC.** 

KIMBALL HILL RD., WILTON, NH 03086-9742 U.S.A. (603) 878-1616

**ELEMENT CLAMP SS-EC-4-150-521**

MATERIAL	316 SS	SCALE	2:1	DWG. No.	
UNLESS OTHERWISE SPECIFIED DIMENSIONS ARE IN INCHES DONOT SCALE DRAWING		A SIZE		<b>SS EC 4 150 521-A</b>	
		SHEET 1 OF 1		MODEL No.	443EB01

8 7 6 5 4 3 2 1