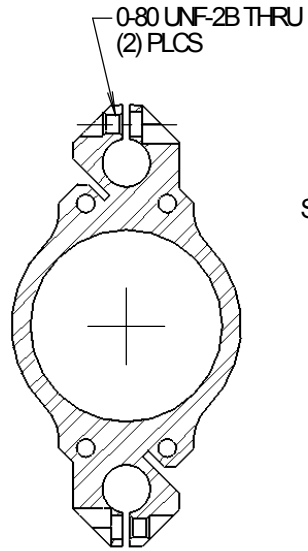
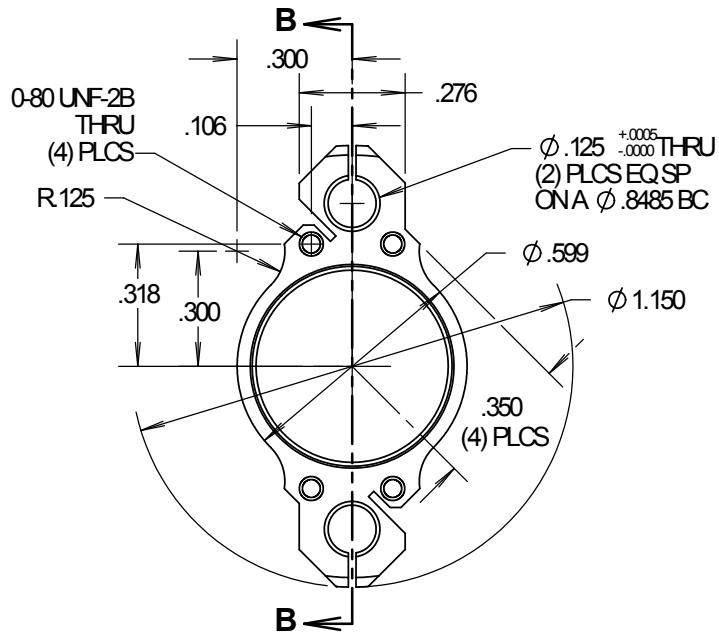
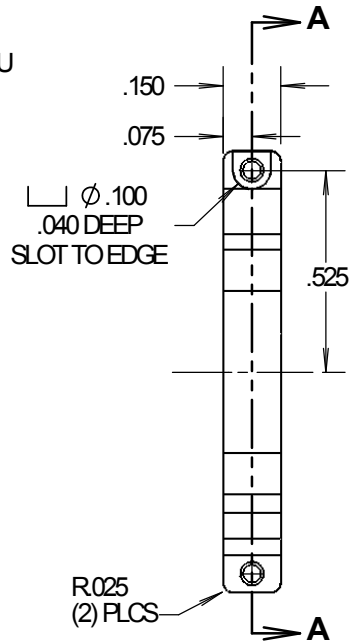




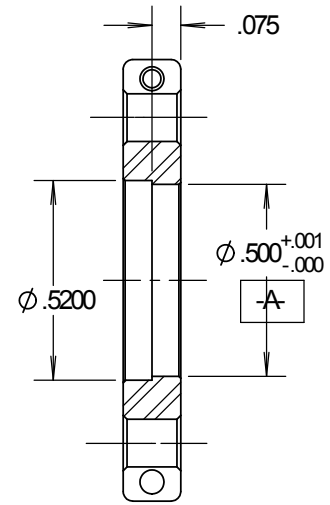
ACTUAL SIZE



SECTION A-A



(ALL DIM'S TYP
(2) PLCS, 180° APART)



SECTION B-B

REV	REVISION DESCRIPTION	DATE	BY	CHK	QTY	USED ON
A	INITIAL RELEASE	11/07/05	DJO			

UNLESS OTHERWISE SPECIFIED
DIMENSIONS ARE IN INCHES
TOLERANCES ARE:
XX OR XX 1/64 ANGULAR ± 0.5°
XXX ± 0.01 DONOT
XXXX ± 0.003 SCALE
XXXXX ± 0.0010 DRAWING
THIS DOCUMENTATION IS THE PROPERTY OF
KIMBALL PHYSICS, INC. AND IS PROVIDED TO
THE RECEIVING PARTY (AND ITS EMPLOYEES
HAVING A NEED TO KNOW) SOLELY FOR
EVALUATION. IT MAY NOT BE USED BY THE
RECEIVING PARTY FOR ANY OTHER PURPOSE
OR DISCLOSED TO ANY THIRD PARTY WITHOUT
THE WRITTEN CONSENT OF KIMBALL PHYSICS, INC.

KIMBALL PHYSICS INC.

KIMBALL HILL RD., WILTON, NH 03086-9742 U.S.A. (603) 878-1616

ELEMENT CLAMP SS-EC-2-150-500/520

MATERIAL	316 SS	SCALE	21	DWG. No.	SS_EC_2_150_500_520-A
FINISH	32	BREAK EDGES	0.005/0.010	A SIZE	
			SHEET 1 OF 1	MODEL No.	443EB10