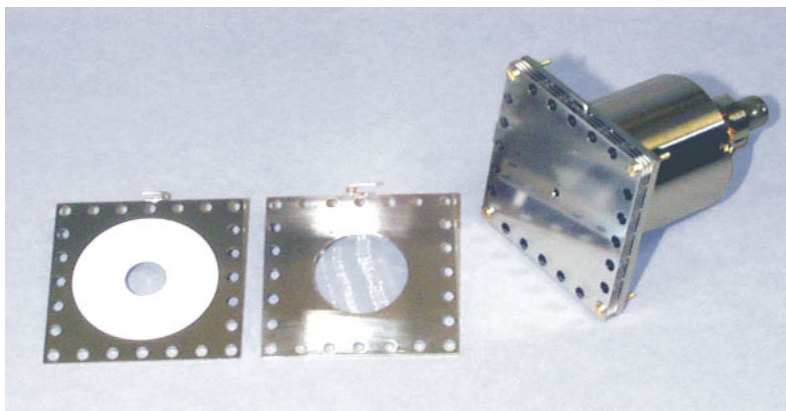


FEATURES / OPTIONS

INPUT: 4 WATTS MAXIMUM CONTINUOUS
 APERTURE: 11.28 MM DIA (1 CM² AREA) STANDARD
 OTHER APERTURE SIZES AVAILABLE
 UP TO 11.28 MM DIA MAX
 MAXIMUM OPERATING TEMPERATURE: 350°C
 FULLY BAKEABLE
 HIGH TRAPPING EFFICIENCY:
 SECONDARY EMISSION YIELD SUPPRESSED
 (ENTERING ELECTRONS HIT ANGLED INSIDE
 SURFACES, THUS REDUCING SECONDARY
 EMISSION)
 VACUUM COMPATIBLE BNC FITTING
 CUP ASSEMBLY COMPLETELY ENCLOSED IN
 GROUND SHIELD
 OPTIONAL: PHOSPHOR SCREEN ON FRONT PLATE
 (AROUND ENTRANCE APERTURE)
 OPTIONAL: GROUND, RETARDING, AND
 SUPPRESSION GRIDS
 FOR USE AS PARTICLE ENERGY ANALYZER
 (SEE DISCUSSION IN FARADAY CUP
 INTRODUCTION)
 OPTIONAL: BRAIDED-SHIELD COAXIAL CABLE

MODEL FC-72A Faraday Cup

*FC-72A Faraday Cup,
 shown with optional phosphor screen and optional grid plate separate (0.5X)*

